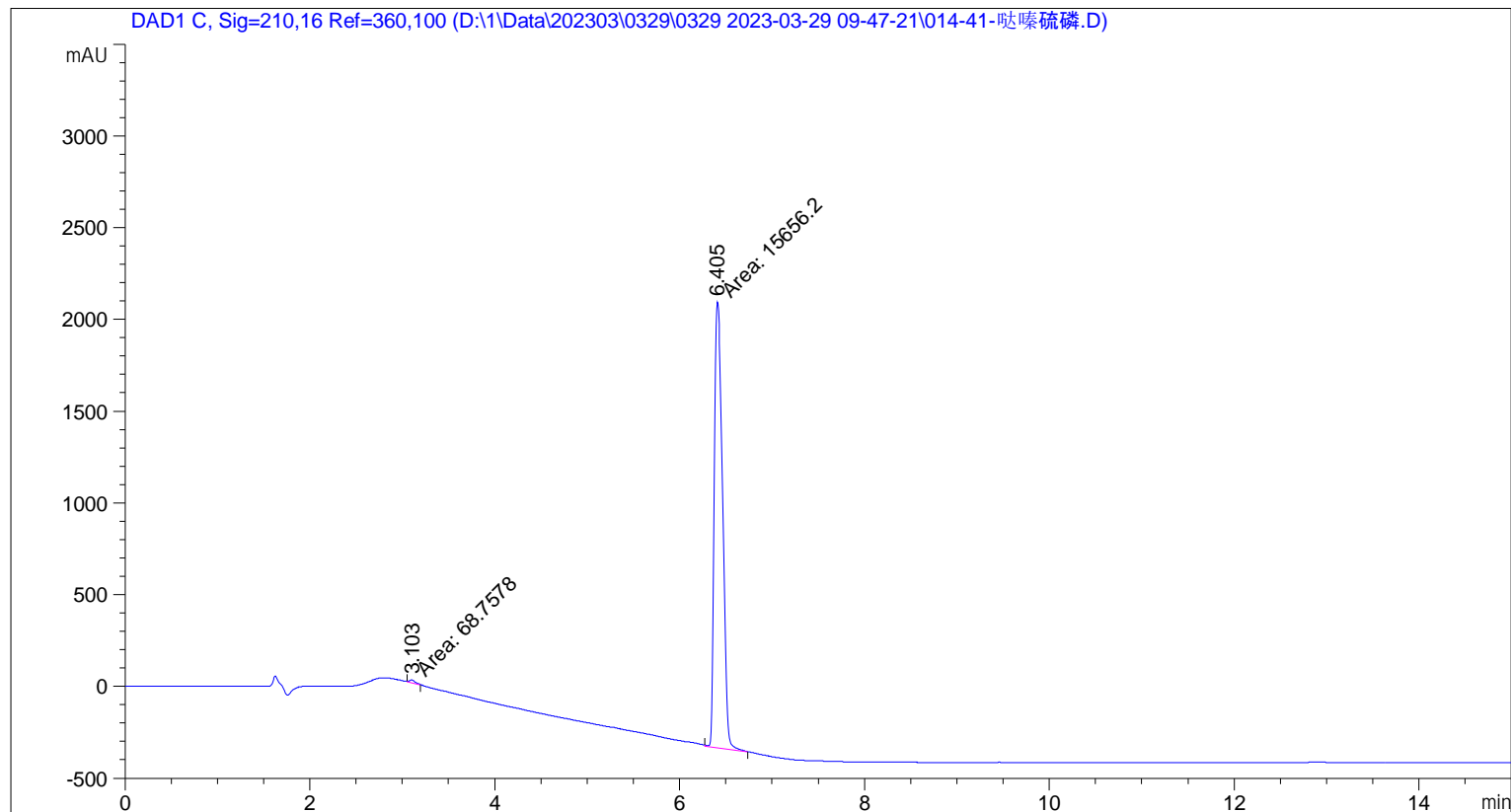


Sample Name: 哒嗪硫磷

```

=====
Acq. Operator   : zhuyueyue                      Seq. Line :   14
Sample Operator : zhuyueyue
Acq. Instrument : LC03                          Location  :    41
Injection Date  : 3/29/2023 2:47:13 PM          Inj       :    1
                                                Inj Volume: 5.000 µl
Different Inj Volume from Sample Entry! Actual Inj Volume : 2.000 µl
Acq. Method     : D:\1\Data\202303\0329\0329 2023-03-29 09-47-21\NORMLA-TFA.M
Last changed    : 2/15/2023 9:42:44 AM by zhuyueyue
Analysis Method : D:\1\Data\202303\0329\0329 2023-03-29 09-47-21\NORMLA-TFA.M (Sequence
Method)
Last changed    : 3/29/2023 3:26:38 PM by zhuyueyue
                  (modified after loading)
Additional Info : Peak(s) manually integrated
    
```



Area Percent Report

```

Sorted By      :      Signal
Multiplier     :      1.0000
Dilution       :      1.0000
Use Multiplier & Dilution Factor with ISTDs
    
```

Signal 1: DAD1 C, Sig=210,16 Ref=360,100

Peak #	RetTime [min]	Type	Width [min]	Area [mAU*s]	Height [mAU]	Area %
1	3.103	MM	0.0774	68.75779	14.81040	0.4373
2	6.405	MM	0.1073	1.56562e4	2431.22070	99.5627

Totals : 1.57250e4 2446.03111

Sample Name: 哒嗪硫磷

=====

*** End of Report ***