

哒嗪硫磷 HNMR in CDCl3

7.724  
7.704  
7.527  
7.508  
7.489  
7.433  
7.415  
7.397  
7.308  
7.224  
7.200  
7.140  
7.116

4.359  
4.341  
4.334  
4.324  
4.317  
4.310  
4.300  
4.292  
4.275  
3.530

1.604  
1.406  
1.388  
1.371

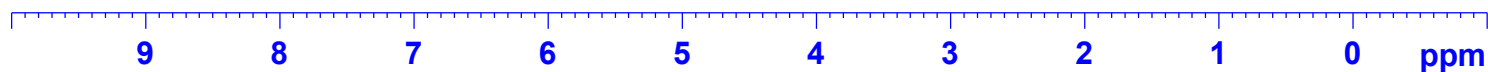
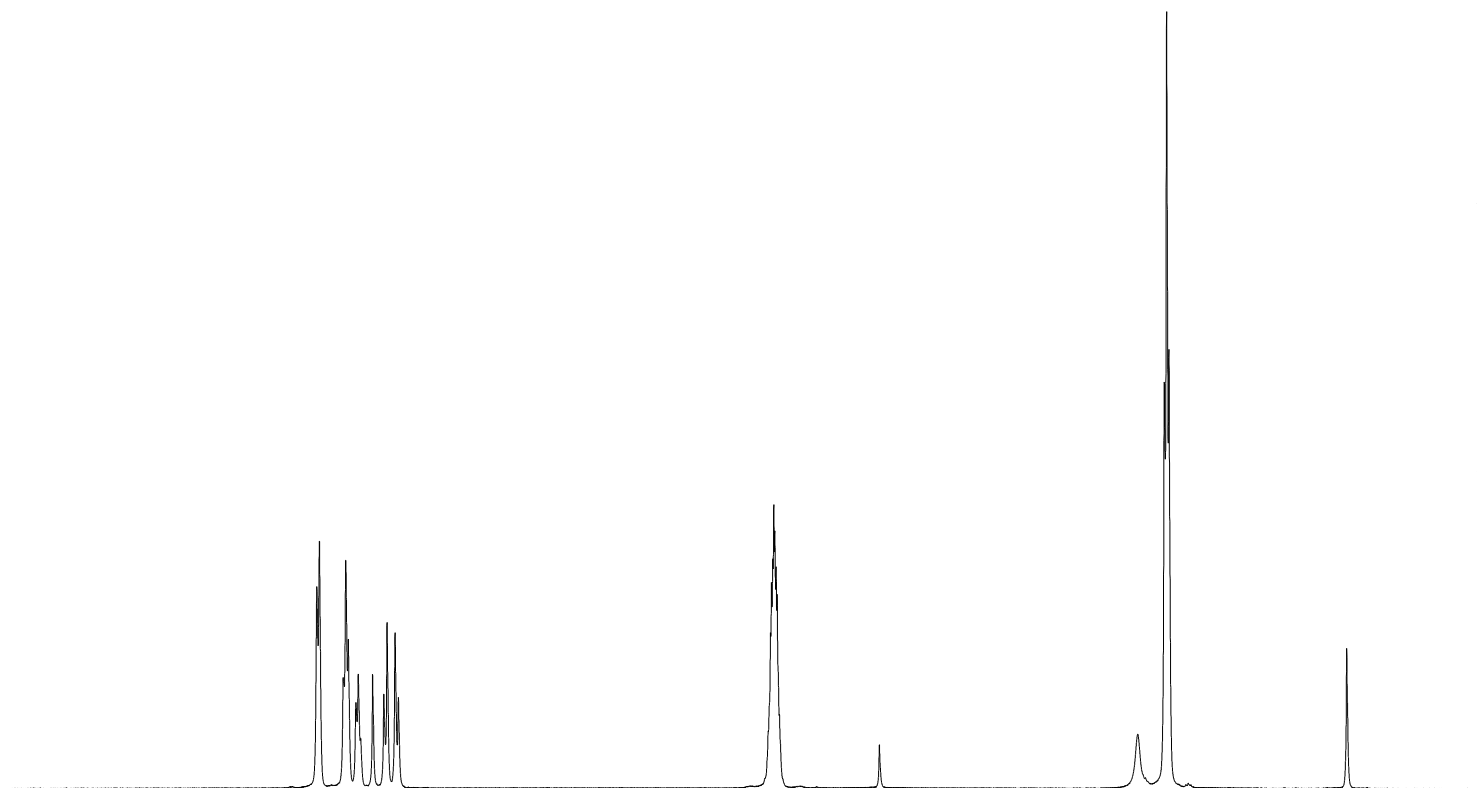
— 0.046



Current Data Parameters  
NAME 哒嗪硫磷  
EXPNO 6  
PROCNO 1

F2 - Acquisition Parameters  
Date\_ 20230330  
Time\_ 9.47  
INSTRUM WNMRI-400MHz  
PULPROG slpul  
TD 38860  
SOLVENT CDCl3  
NS 32  
DS 0  
SWH 9715.025 Hz  
AQ 1.9999948 sec  
RG 65.2  
DW 51.467 usec  
DE 30.00 usec  
TE 273.2 K  
NUC1 1H  
PL1 120.00 dB  
SFO1 399.8242402 MHz

F2 - Processing parameters  
SI 131072  
SF 399.8203595 MHz  
WDW EM  
SSB 0  
LB 0.50 Hz  
GB 0.1  
PC 1.00



2.01  
2.03  
1.00  
1.03  
1.01

4.03

0.15

6.07